

# MONOBLOCK VALVE 45LTS L45 INDUSTRIAL VALVES



- Mono-block design with 3/8" Ports
- 45lts flow at 400 Bar max pressure
- Full range of spool and shifting options including
- power beyond



The L45 valve offers 5 sections with many spool and shift options

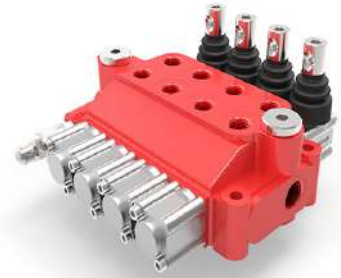
Code	Type
L45A1 X X	Base code - Select Spool + Shifting Code

Add Spool	Type	Add Shifting	Type
A	Single Acting	Z	Spring Return
B	Single Acting	Y	Detent 2 position
F	Motor	X	Air Pilot
D	D/Acting with 4th pos	P	4th pos float detent
		MS	Microswitch

# MONOBLOCK VALVE 45LTS M45 INDUSTRIAL VALVES



- Mono-block design with 1/2" P-T / 3/8" A-B Ports
- 45lts flow at 350 Bar max pressure
- Full range of spool and shifting options including power beyond



The M45 valve offers 5 sections with many spool and shift options

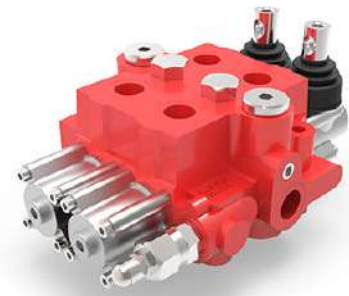
Code	Type
M45A1 XX	Base code - Select Spool + Shifting Code For Each Spool
M45A2 XX	Base code - Select Spool + Shifting Code For Each Spool
M45A3 XX	Base code - Select Spool + Shifting Code For Each Spool
M45A4 XX	Base code - Select Spool + Shifting Code For Each Spool
M45A5 XX	Base code - Select Spool + Shifting Code For Each Spool

Add Spool	Type	Add Shifting	Type
A	Single Acting	Z	Spring Return
B	Single Acting	Y	Detent 2 position
F	Motor	X	Air Pilot
D	D/Acting with 4th pos	P	4th pos float detent
		MS	Microswitch

# MONOBLOCK VALVE 60LTS M70 INDUSTRIAL VALVES



- Mono-block design with 1/2" Ports
- 60lts flow at 350 Bar max pressure
- Full range of spool and shifting options including power beyond



The M70 valve offers 5 sections with many spool and shift options

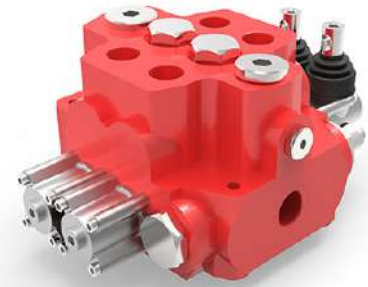
Code	Type
M70A1 XX	Base code - Select Spool + Shifting Code For Each Spool
M70A2 XX	Base code - Select Spool + Shifting Code For Each Spool
M70A3 XX	Base code - Select Spool + Shifting Code For Each Spool
M70A4 XX	Base code - Select Spool + Shifting Code For Each Spool
M70A5 XX	Base code - Select Spool + Shifting Code For Each Spool

Add Spool	Type	Add Shifting	Type
A	Single Acting	Z	Spring Return
B	Single Acting	Y	Detent 2 position
F	Motor	X	Air Pilot
		Q	Spring Ret A / Detent B
		O	2 Position Detent A

# MONOBLOCK VALVE 120LTS M130 INDUSTRIAL VALVES



- Mono-block design with 3/4" P-A-B / 1" T Ports
- 120lts flow at 220 Bar max pressure
- Full range of spool and shifting options including power beyond



The M130 valve offers 3 sections with many spool and shift options

Code	Type
M130A1 XX	Base code - Select Spool + Shifting Code For Each Spool
M130A2 XX	Base code - Select Spool + Shifting Code For Each Spool
M130A3 XX	Base code - Select Spool + Shifting Code For Each Spool

Add Spool	Type	Add Shifting	Type
A	Single Acting	Z	Spring Return
B	Single Acting	Y	Detent 2 position
F	Motor	X	Air Pilot
		Q	Spring Ret A / Detent B
		O	2 Position Detent A

# SECTIONAL VALVE 100LTS HC-D6 INDUSTRIAL VALVES



- Sectional design with 3/4" T Ports 100lts flow at
- 100lts flow at 350 Bar max pressure
- Full range of spool and shifting options including power beyond

The HC-D6 valve offers up to 8 sections with many spool and shift options

Code	Type
HC-D6/1 XX	Base code - Select Spool + Shifting Code For Each Spool
HC-D6/2 XX	Base code - Select Spool + Shifting Code For Each Spool
HC-D6/3 XX	Base code - Select Spool + Shifting Code For Each Spool
HC-D6/4 XX	Base code - Select Spool + Shifting Code For Each Spool
HC-D6/5 XX	Base code - Select Spool + Shifting Code For Each Spool
HC-D6/6 XX	Base code - Select Spool + Shifting Code For Each Spool

Add Spool	Type	Add Shifting	Type
A	Single Acting	Z	Spring Return
B	Single Acting	Y	Detent 2 position
F	Motor	X	Air Pilot
		Q	Spring Ret A / Detent B
		O	2 Position Detent A

The HC-D6 valve offers port relief A-B on each section as specified at time of order

# SECTIONAL VALVE 250LTS HC-D20 INDUSTRIAL VALVES



- Sectional design with 1" P-A-B / 1 1/4" T Ports
- 250lts flow at 350 Bar max pressure
- Full range of spool and shifting options including power beyond

The HC-D20 valve offers up to 8 sections with many spool and shift options

Code	Type
HC-D20/1 XX	Base code - Select Spool + Shifting Code For Each Spool
HC-D20/2 XX	Base code - Select Spool + Shifting Code For Each Spool
HC-D20/3 XX	Base code - Select Spool + Shifting Code For Each Spool
HC-D20/4 XX	Base code - Select Spool + Shifting Code For Each Spool
HC-D20/5 XX	Base code - Select Spool + Shifting Code For Each Spool
HC-D20/6 XX	Base code - Select Spool + Shifting Code For Each Spool

Add Spool	Type	Add Shifting	Type
A	Single Acting	Z	Spring Return
B	Single Acting	Y	Detent 2 position
F	Motor	X	Air Pilot
		Q	Spring Ret A / Detent B
		O	2 Position Detent A

The HC-D20 valve offers port relief A-B on each section as specified at time of order

# PROPORTIONAL VALVE 150LTS EX38 INDUSTRIAL VALVES



- Sectional design with 3/4" P-T / 1/2" A-B Ports 150lt
- inlet flow / 100lt max spool at 350 Bar max pressure
- Full range of spool and shifting options
- Port and LS relief options
- Electric and Electro-Proportional Control
- Load sense OR Flow Sharing Control



The EX38 valve offers up to 10 sections with many spool and shift options

Code	Type
Order Specific	Unique Code For Each Valve - Supported by valve schematic, drawing and CAD file

Add Spool	Type	Add Shifting	Type
N/A	Single Acting	N/A	Spring Return
N/A	Single Acting	N/A	Detent 2 position
N/A	Motor	N/A	Air Pilot
		N/A	Spring Ret A / Detent B
		N/A	Electric Shift 12/24VDC
		N/A	Electro Proportional Shift 12/24VDC

# CHECK VALVES

## INDUSTRIAL VALVES

- Body zinc plated steel
- Internal parts hardened and ground steel
- Seals BUNA N standard
- Minor leakage with closed valve



This valve is block flow in one direction and is also commonly used as a bypass/wind down valve on hydraulic motors.

Code Bypass	Port Size BSPP	Flow Lts/min	Max Pressure bar
810500401	1/4"	15	500
810500402	3/8"	30	500
810500403	1/2"	50	500
810500404	3/4"	90	500
810500405	1"	150	500



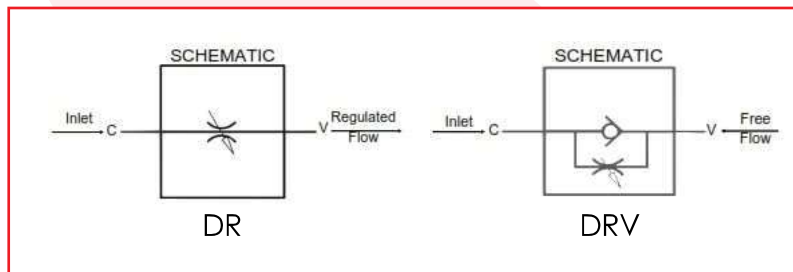
# NEEDLE VALVES

## INDUSTRIAL VALVES

- Body zinc plated steel
- Internal parts hardened and ground steel
- Seals BUNA N standard
- Minor leakage with closed valve



This valve is used to adjust flow speed of actuators in one direction; flow is free in the reverse one.



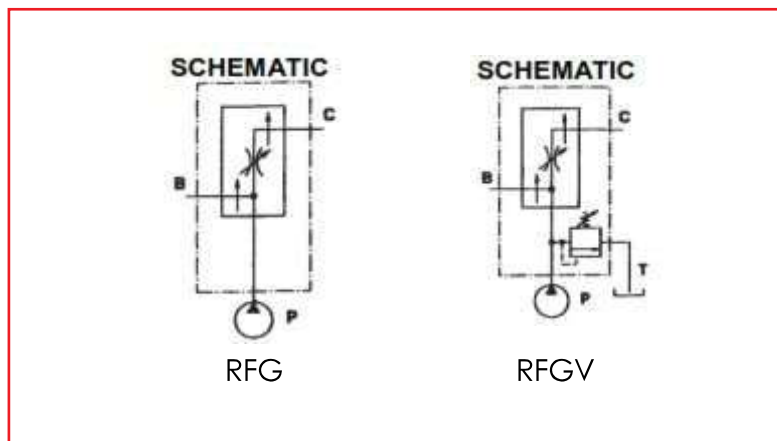
Code Without Bypass	Code With Bypass	Port Size BSP	Flow Lts/min	Max Pressure bar	Cracking Pressure bar
DV08	DRV08	1/8"	15	350	0,5
DV10	DRV10	3/8"	30	350	0,5
DV12	DRV12	1/2"	50	350	0,5

# PRIORITY FLOW VALVES

## INDUSTRIAL VALVES

- Body cast iron
- Internal parts hardened and ground steel
- Seals BUNA N standard
- With or without relief valve

Pressure Compensated Priority Flow valves are used to maintain a precise flow on one port regardless of pressure fluctuation, sending excess flow to another port for use or to return to tank.



Code Without Relief Valve	Code With Relief Valve	Port B	Port C	Port P	Port T	Flow Lts/min	Max Pressure bar
		BSPP	BSPP	BSPP	BSPP		
RFG	RFGV	1/2"	1/2"	1/2"	3/4"	90	350

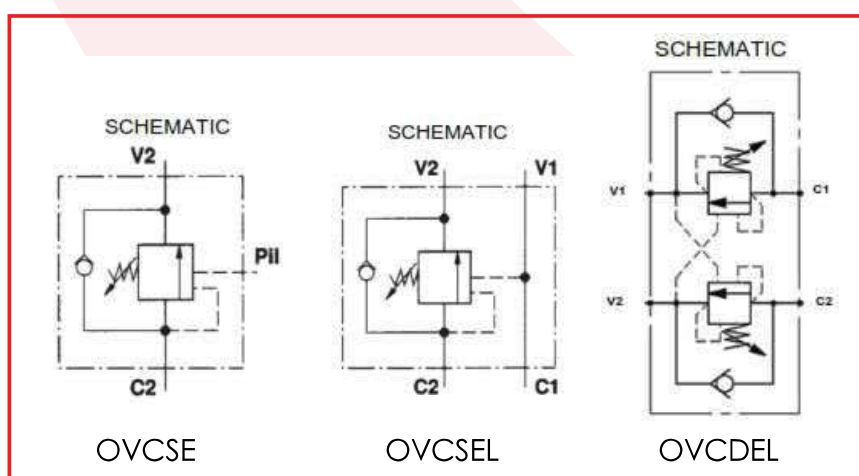
# OVERCENTRE VALVES

## INDUSTRIAL VALVES

- Body cast iron
- Internal parts hardened and ground steel
- Seals BUNA N standard
- External or internal pilot



Overcentre valves are used to control speed in particular with over running loads, it can additionally provide a holding function when deactivated and act as a hose break valve if required.



Code	Type	Port C1	Port C2	Port V1	Port V2	Port Pilot	Pilot Ratio	Flow Lts/min	Max Pressure bar
		BSP	BSP	BSP	BSP	BSP			
VBCD38SE/P	Single OVC Pilot		3/8"		3/8"	1/8"	4.5:1	45	350
VBCD12SE/P	Single OVC Pilot		1/2"		1/2"	1/8"	4.5:1	60	350
VBCD38SE/A	Single OVC Inline	3/8"	3/8"	3/8"	3/8"		4.5:1	45	350
VBCD12SE/A	Single OVC Inline	1/2"	1/2"	1/2"	1/2"		4.5:1	60	350
VBCD34SE/A	Single OVC Inline	3/4"	3/4"	3/4"	3/4"		5.5:1	95	350
VBCD38DE/A	Dual OVC Inline	3/8"	3/8"	3/8"	1/8"		4.5:1	45	350
VBCD12DE/A	Dual OVC Inline	1/2"	1/2"	1/2"	1/2"		4.5:1	60	350
VBCD34DE/A	Dual OVC Inline	3/4"	3/4"	3/4"	3/4"		5.5:1	95	350

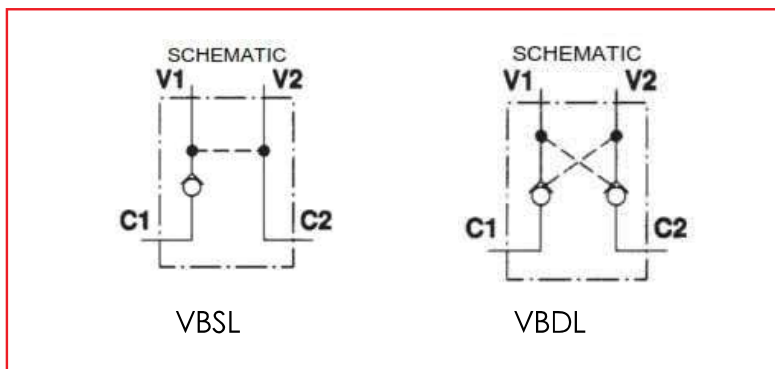
# PILOT CHECK VALVES

## INDUSTRIAL VALVES

- Body cast iron
- Internal parts hardened and ground steel
- Seals BUNA N standard
- External or internal pilot



These valves are used to block the cylinder in one direction. The flow is free in one direction. The flow is free in one direction and blocked in the reverse direction until pilot pressure is applied.



Code	Type	Port	Port	Port	Port	Pilot Ratio	Flow Lts/min	Max Pressure bar
		C1	C2	V1	V2			
		BSP	BSP	BSP	BSP			
VBSL38	Single Pilot Check	3/8"	3/8"	3/8"	3/8"	4.5:1	45	350
VBSL12	Single Pilot Check	1/2"	1/2"	1/2"	1/2"	4.5:1	60	350
VBSL34	Single Pilot Check	3/4"	3/4"	3/4"	3/4"	5.5:1	95	350
VBDL38	Dual Pilot Check	3/8"	3/8"	3/8"	3/8"	4.5:1	45	350
VBDL12	Dual Pilot Check	1/2"	1/2"	1/2"	1/2"	4.5:1	60	350
VBDL34	Dual Pilot Check	3/4"	3/4"	3/4"	3/4"	5.5:1	95	350

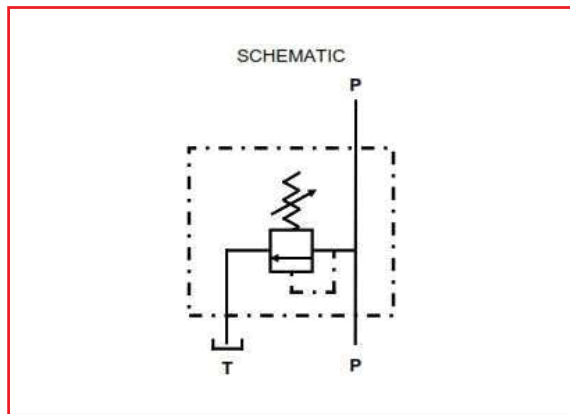
# RELIEF VALVES

## INDUSTRIAL VALVES

- Body cast iron
- Internal parts hardened and ground steel
- Seals BUNA N standard
- External or internal pilot



The relief valve provides overload protection in a fast and accurate way: when it reaches pressure setting, the valve opens allowing pressure relief in order not to exceed this setting.



Code	Type	Port P	Port P	Port T	Flow Lts/min	Max Pressure bar
		BSP	BSP	BSP		
VMP12	Inline relief	1/2"	1/2"	1/2"	40	350
VMP34	Inline relief	3/4"	3/4"	3/4"	80	350
VMP100	Inline relief	1"	1"	1"	130	350

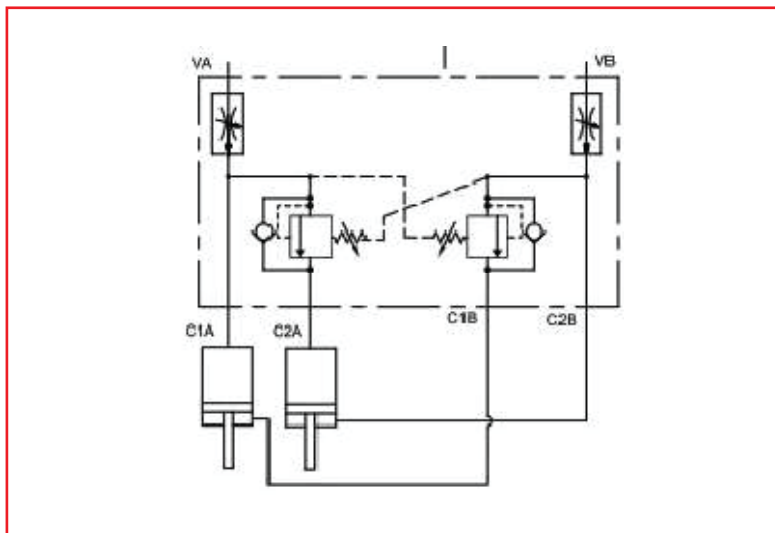
# SEQUENCE VALVES

## INDUSTRIAL VALVES

- Alloy Body
- High quality cartridges
- Integrated flow control



The Sequence valve controls the sequence of functions within a hydraulic system on reaching a preset pilot pressure. The DELSV valve is specifically design to sequence two double acting ram functions.



Code	Type	Port VA	Port VB	Port C1A	Port C1B	Port C2A	Port C1B	Flow Lts/min	Max Pressure bar
DELSV002	Dual Sequence with Flow Control	1/2"	1/2"	1/2"	1/2"	1/2"	1/2"	60	350