

AIR CLUTCH HEAVY DUTY DRIVES



3510530000

- Direct mount to all ISO 4 Bolt PTO's
- In-built oil pump
- Compact design
- "Plug-in" to ISO STD engine PTO's
- Oil cooled (Tank & hose kit not included)



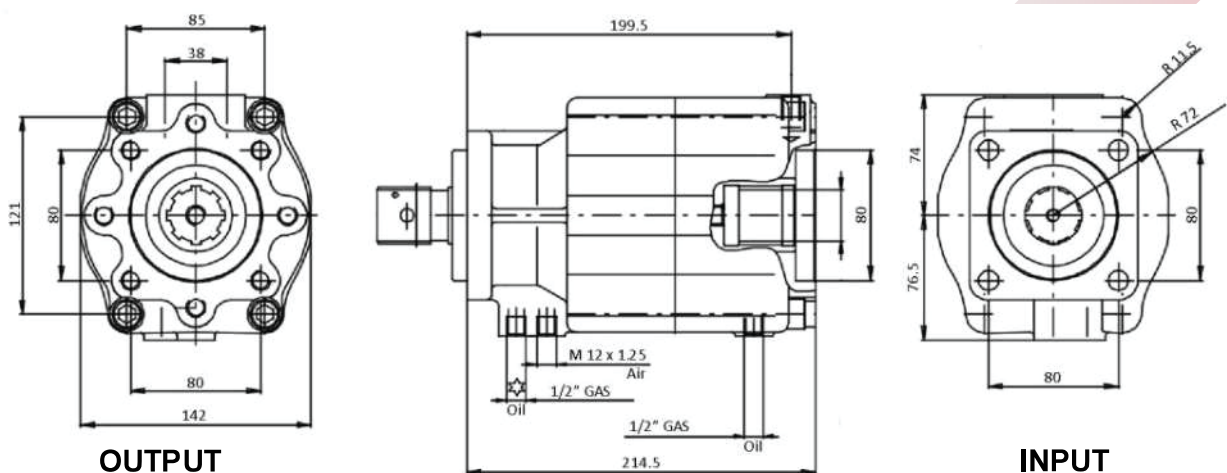
NOTE: Air clutch 3510680000, with alloy body is no longer manufactured. The cast steel body 3510530000 is an identical replacement.

NOTE: Where the clutch is connected to a main hydraulic reservoir for cooling, standard hydraulic mineral oil or AFT is acceptable.

TECHNICAL SPECIFICATIONS

MAX TORQUE (Kgm)	MAX. ENGAGEMENT (rpm)	MAX. ENGAGED (rpm)	MAX. FULL LOAD (rpm)	INTERNAL RATIO
55	1000	3200	2500	1:1
OIL GRADE				
SAE 20 Minimum		SAE 40 Maximum		
SUGGESTED OIL	RECOMMENDED TANK SIZE (L)		WEIGHT (kg)	
Castrol TFC410 or Equiv.	15		22	

DIMENSIONS



AIR CLUTCH HEAVY DUTY DRIVES

3510530000

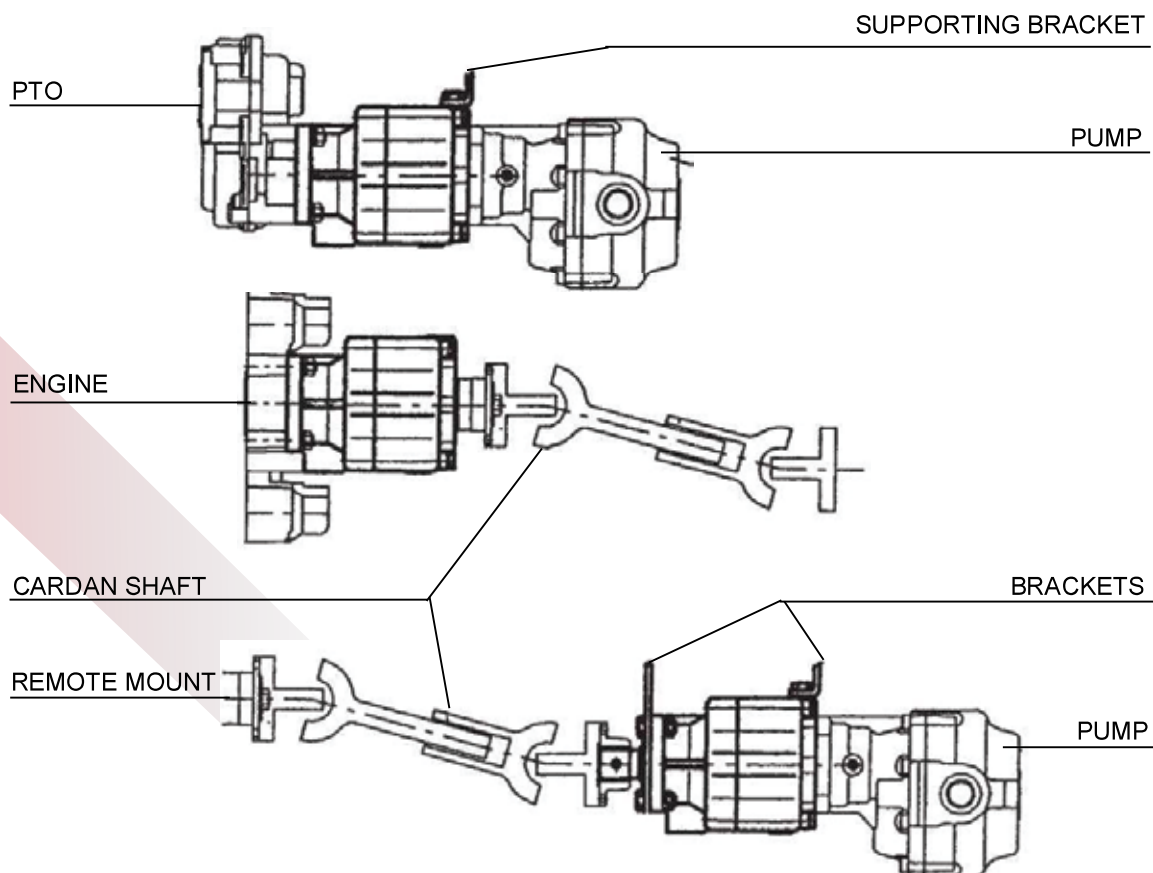
OUTPUT OPTIONS

PART NUMBER	DESCRIPTION
205X0870000	ISO 4 BOLT PUMP MOUNT
205A6160000	3 BOLT PUMP MOUNT
205F3230000	FLANGE K1300

REMOTE MOUNT

LS024	INPUT FLANGE K1400
-------	--------------------

INSTALLATION OPTIONS

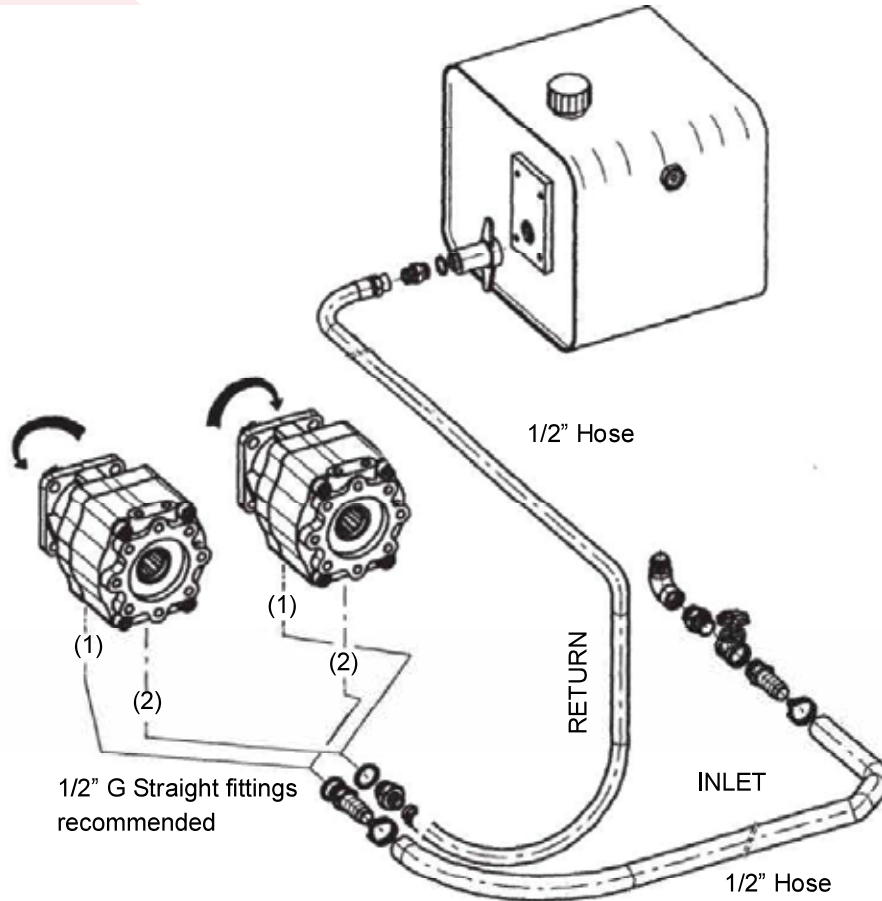


AIR CLUTCH

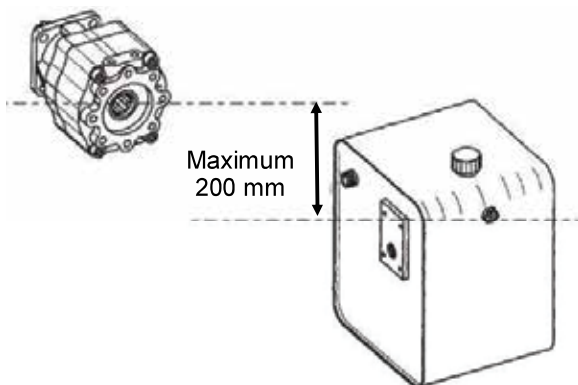
HEAVY DUTY DRIVES

INSTALLATION INSTRUCTIONS

Connect oil inlets (1) & (2) to main hydraulic tank, use hose with minimum internal diameter of 1/2". If the system is not equipped with a main oil tank for other use, a metal oil tank with minimum capacity of 15 lt. must be used.

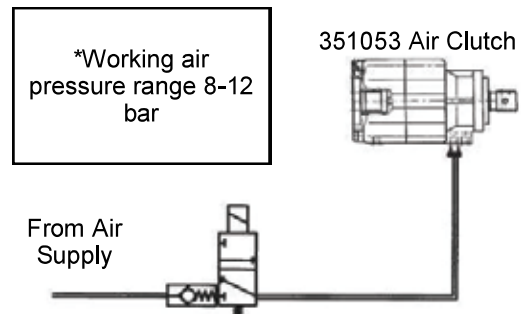


OIL COOLING SET UP



Note: Centre line of clutch must not be mounted more than 200mm above the minimum oil level of the tank

AIR SUPPLY SET UP



Note: Air pressure integrity must be assured to transmit loads **WITHOUT** clutch slippage

FPS BELT DRIVE CLUTCH

HEAVY DUTY DRIVES

OPTIONS

TANK KIT		
CODE	CAPACITY	DIMENSIONS
216059AP20	15 L	450(L) x 250(B) x 230(W)



AIR KIT		
CODE	VOLTAGE	DESCRIPTION
EAC007-12V	12V	Clutch Engagement with positive pressure retention
EAC007-24V	24V	Clutch Engagement with positive pressure retention



HOSE KIT (HKAC001)		
CODE	QTY	DESCRIPTION
PL18	4	1/2" push on hose
HES12PM120PO	1	1/2" BSPT male 1/2" push on hose
HES12BSPFM12PO	1	1/2" BSP FM 90 1/2" push on hose end
HER12P12PO	2	1/2" BSP FM 90 1/2" push on hose end
NIP12P12P	2	Nipple 1/2" BSPP to 1/2" BSPP
NIP34P12P	1	Reducer 3/4" x 1/2" BSPP
DW12	2	Dowty washer 1/2"
DW34	1	Dowty washer 3/4"



FPS BELT DRIVE CLUTCH

HEAVY DUTY DRIVES



- 600Nm, 1000Nm & 1800Nm variants
- Up to 4700 rpm input speed
- Available in a wide range of common shaft sizes
- Heavy duty clutch for engagement under load



The FPS Clutch mounts directly to the drive shaft of high load equipment such as water and vacuum pumps to provide Clutching function.

Code	Torque	Max Speed	Max Shaft Diameter
	Nm	rpm	(mm)
FPS600/38	600	4700	38
FPS600/48	600	4700	48
FPS600/55	600	3000	55
FPS1000/55	1000	3000	55
FPS1000/70	1000	2500	70
FPS1800/70	1800	2500	70
FPS1800/85	1800	2000	85

FPS BELT DRIVE CLUTCH

HEAVY DUTY DRIVES

OPTIONS

TANK KIT		
CODE	CAPACITY	DIMENSIONS
216059AP20	15 L	450(L) x 250(B) x 230(W)



AIR KIT		
CODE	VOLTAGE	DESCRIPTION
EAC007-12V	12V	Clutch Engagement with positive pressure retention
EAC007-24V	24V	Clutch Engagement with positive pressure retention



HOSE KIT (HKAC001)		
CODE	QTY	DESCRIPTION
PL18	4	1/2" push on hose
HES12PM120PO	1	1/2" BSPT male 1/2" push on hose
HES12BSPFM12PO	1	1/2" BSP FM 90 1/2" push on hose end
HER12P12PO	2	1/2" BSP FM 90 1/2" push on hose end
NIP12P12P	2	Nipple 1/2" BSPP to 1/2" BSPP
NIP34P12P	1	Reducer 3/4" x 1/2" BSPP
DW12	2	Dowty washer 1/2"
DW34	1	Dowty washer 3/4"



PCV HORIZONTAL SSU

HEAVY DUTY DRIVES



- 3000 Kgm through torque
- 120 Kgm output torque per shaft
- Direct or Clutch engagement of both outputs
- Auxiliary output drive



The PC series Horizontal SSU is a heavy duty design. Common driving vacuum tankers, generators and other high power hydraulic systems.

Code	Outputs	Aux	Through Torque	Output Torque
			Kgm	Kgm
PCV2/3000	1x Front or Rear	SEA A	3000	120
PCV4/3000	2x Front or Rear	SEA A	3000	120
OPTIONS	Through Shaft Flange Output Flange Options Technology Options		Din 180 / KV150 / Spicer 1600/1800 Din 150 / Spicer 1410 Engagement, Speed and Over Heat Sens kit Cooling kit	

PCV VERTICAL SSU HEAVY DUTY DRIVES



OMSI Trasmissioni S.p.A.



- 3000 Kgm through torque
- 200 Kgm output torque per shaft
- Direct or Clutch engagement
- Auxiliary output drive

The PC series Vertical SSU is a heavy duty design. Common driving vacuum tankers, generators and other high power hydraulic systems.

Code	Type	Outputs	Aux	Through Torque	Output Torque
				Kgm	Kgm
PCV/3000D	Direct	1x Front or Rear	SEAB	3000	200
PCV/3000C	Direct	1x Front or Rear	SEA B	3000	200
OPTIONS	Ratio Through Shaft Flange Output Flange Options Technology Options		Output Ration available 1:1 / 1:1.27 / 1:1.47 Din 180 / KV150 / KV180 / Spicer 1600/1800 Din 150 / Spicer 1410 Engagement, Speed and Over Heat Sens kit Cooling kit		

PCV VERTICAL SSU HEAVY DUTY DRIVES

Optional

Temperature Sensor - Part No. 40350032

Technical Brief

Range: 50°C... + 150°C

Liner Output

Max operating voltage - 25VDC

Max operating current - 5mA

***** Full data sheet available on request**

Mounting Details

